



**Estación seca**

Surface moisture fluxes and exchange

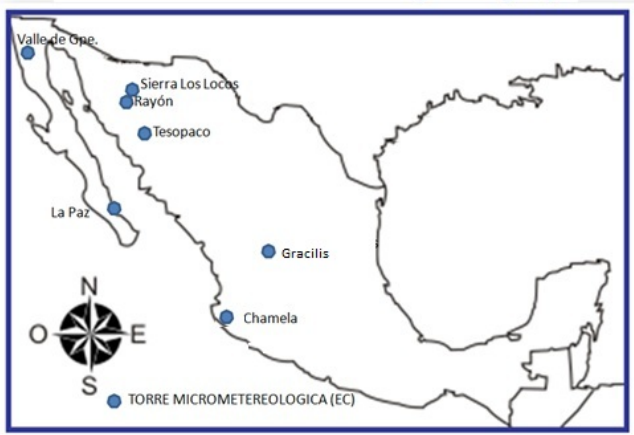
Christopher J Watts

Universidad de Sonora

**Estación húmeda**



### Sitios de Monitoreo Continuo de Flujos de Agua y CO2



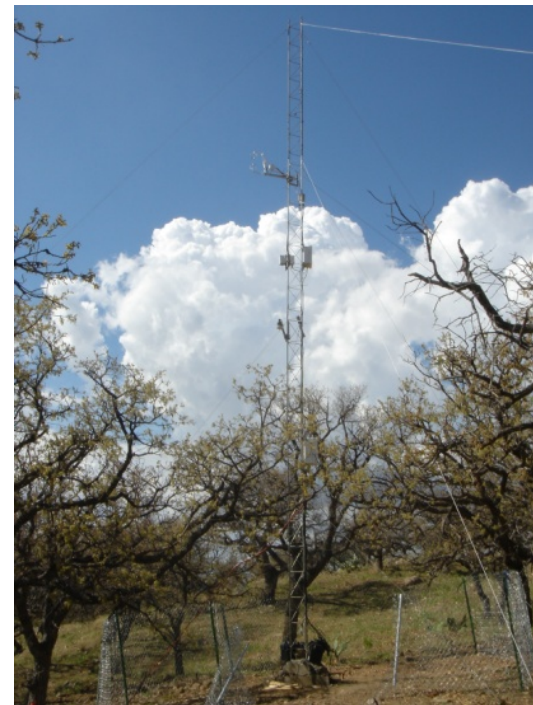
## Sitios de Medición de ET en Sonora



Selva Baja Caducifolia, Tesopaco



Matorral Subtropical, Rayón

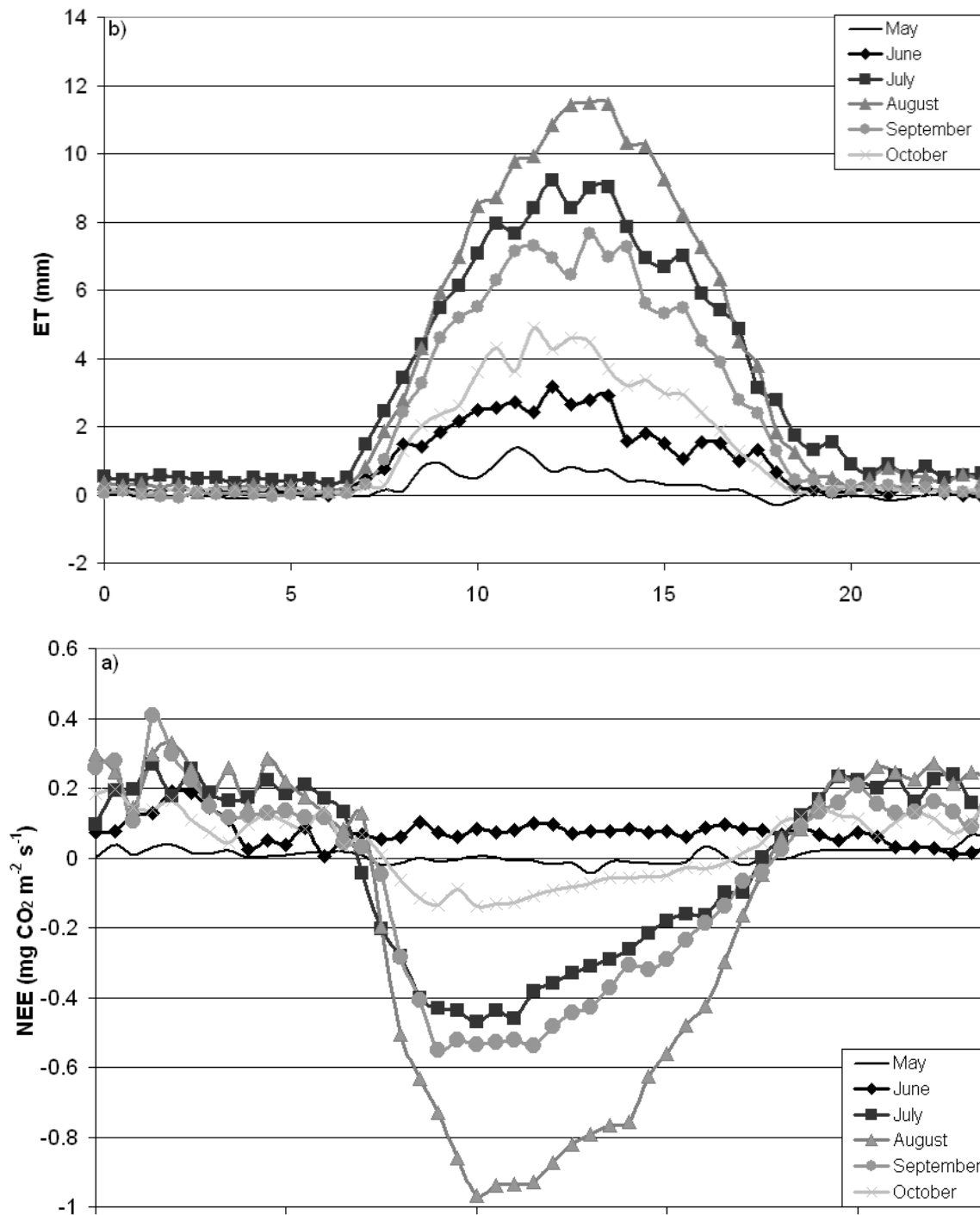


Pastizal con Encino, Los Locos

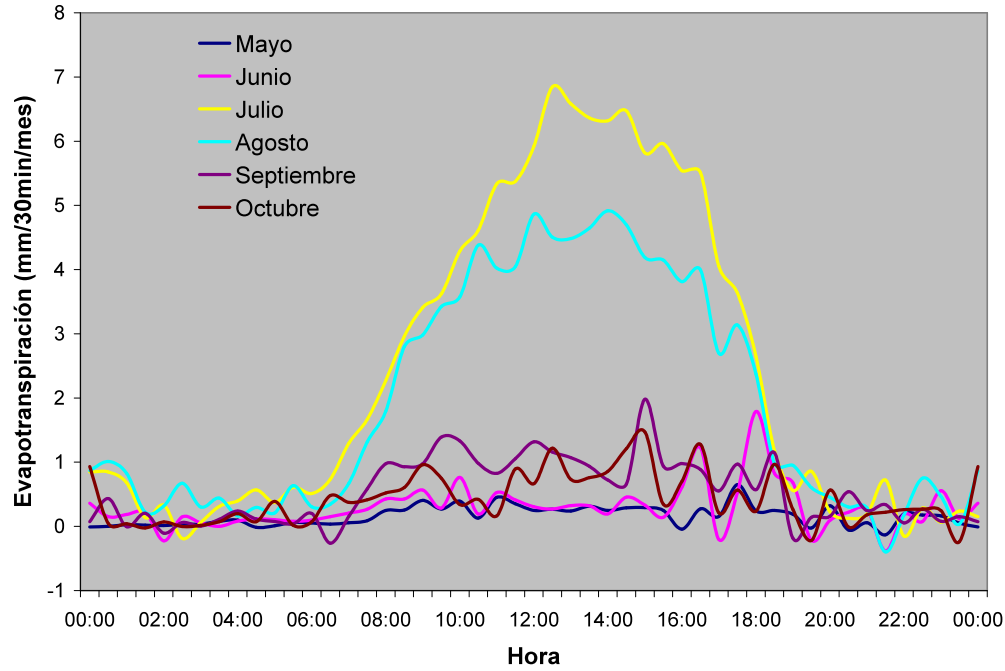
# Tropical Dry Forest in 2006

Measurements of ET y NEE connect ecological and hydrological processes

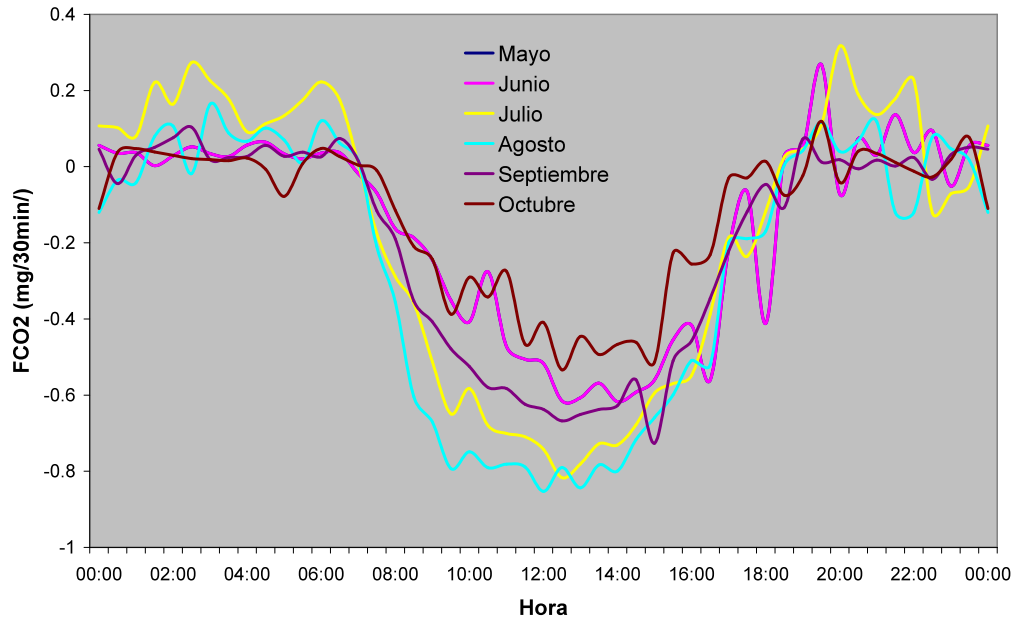
Ecohydrology



Rayon, 2009



Rayon, 2009



# Subtropical Shrubs (Rayon) in 2009

	STS	TDF
ET	7	11.5
NEE	-1	-0.8

EWUE

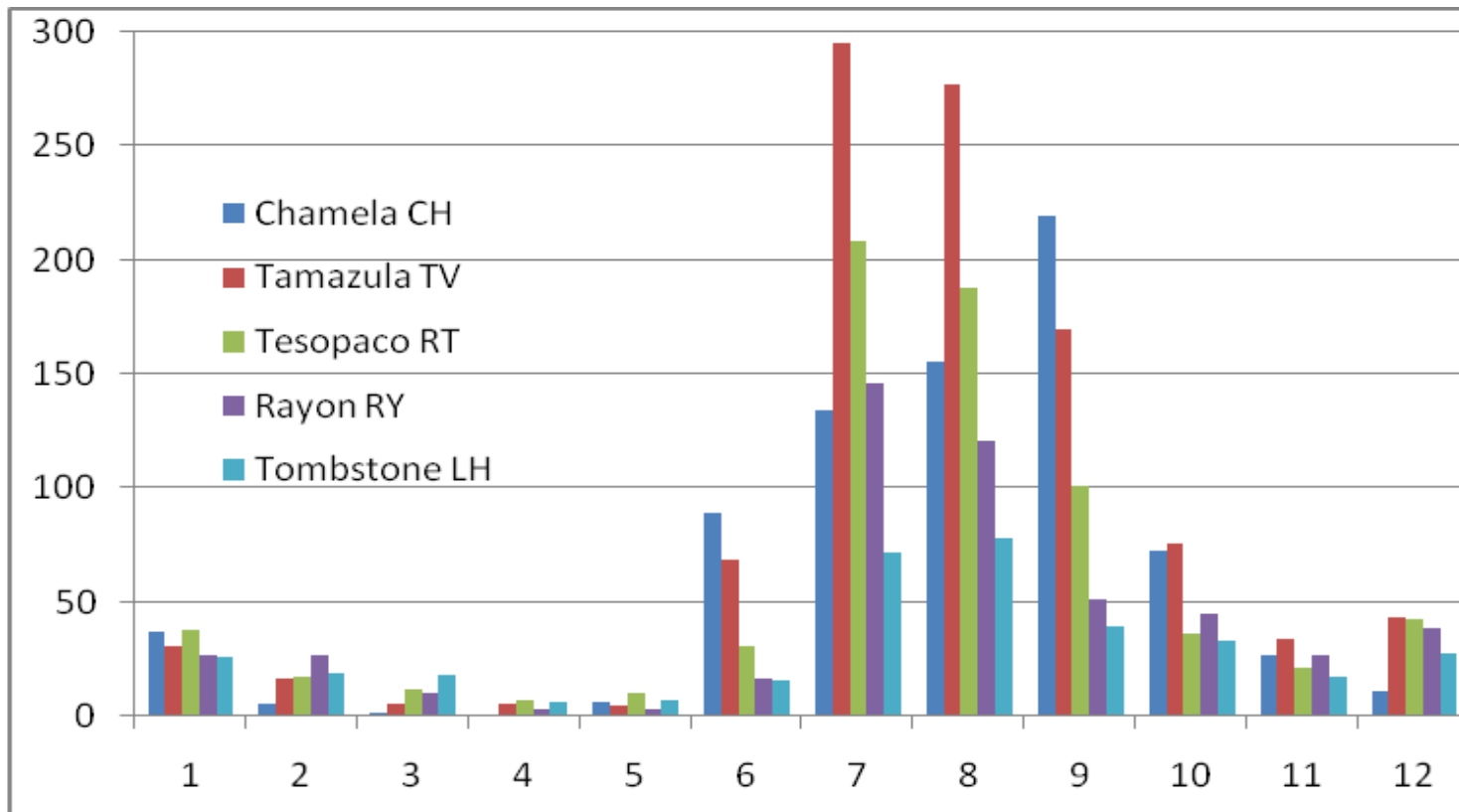
NAM



Selected sites for Study of Land Surface Changes during the NAM

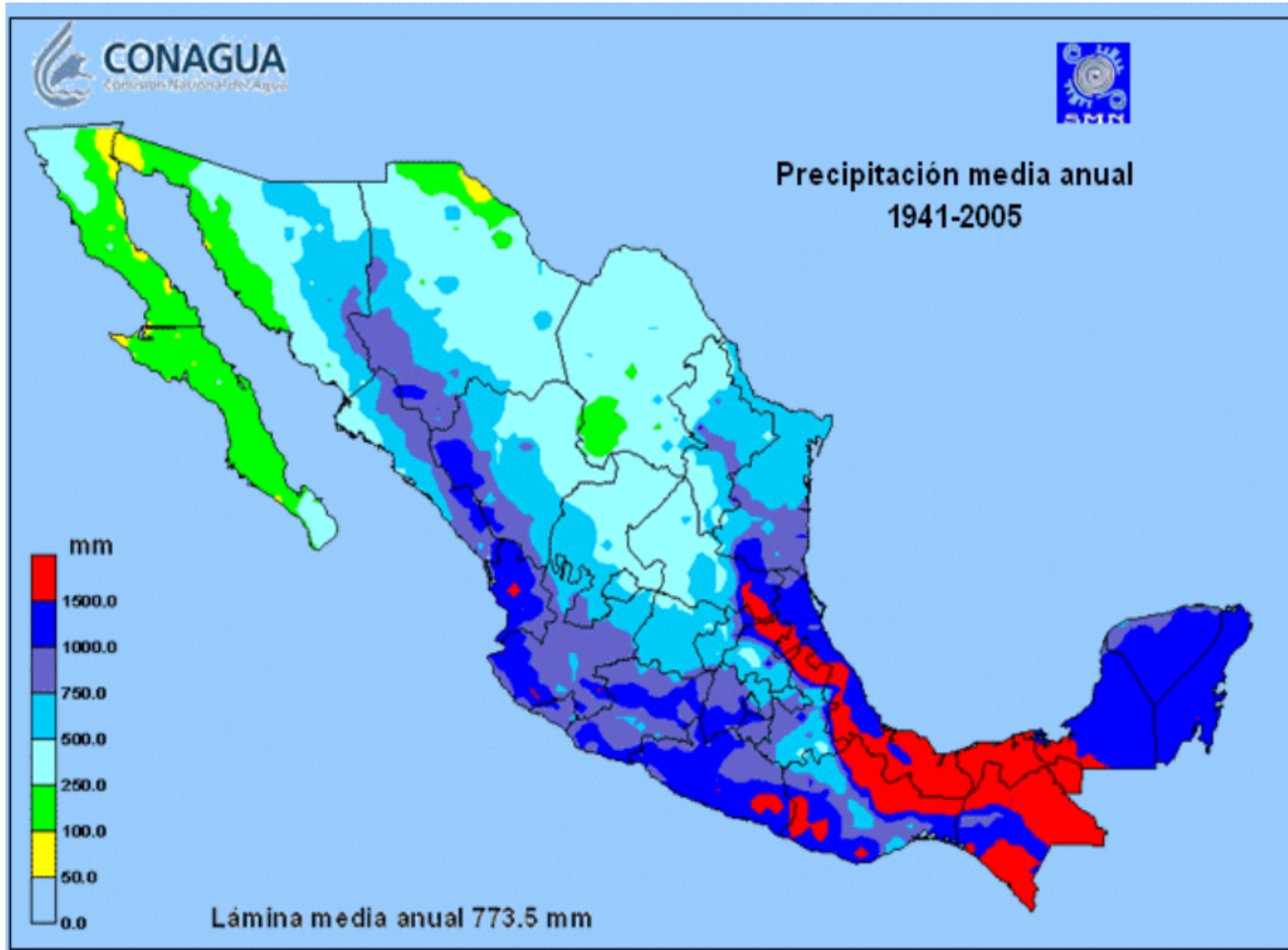
## Vegetation types at selected sites

<b>Sitio</b>	<b>Vegetacion Type</b>	<b>Location</b>	<b>Latitud (°N)</b>	<b>Longitud (°W)</b>	<b>Elevation (m)</b>	<b>Soil Cover Type IGBP Clases</b>
<b>LH</b>	<b>Desert Shrub</b>	Lucky Hills Subwatershed, Tombstone, AZ	31.74	110.05	1,373.0	10 / 7
<b>RY</b>	<b>Desert Shrub</b>	Rayón, SON	29.74	110.54	616.0	7 / 8,10
<b>RT</b>	<b>Tropical Dry Forest</b>	Rosario de Tesopaco, SON	27.85	109.30	460.0	16 / 4,5,10
<b>TV</b>	<b>Tropical Dry Forest</b>	Tamazula de Victoria, DGO	25.0	107.0	526.0	4 / 2,8,9
<b>CH</b>	<b>Tropical Dry Forest</b>	Chamela, JAL	19.65	105.05	183.0	12 / 4,8,9,10,16



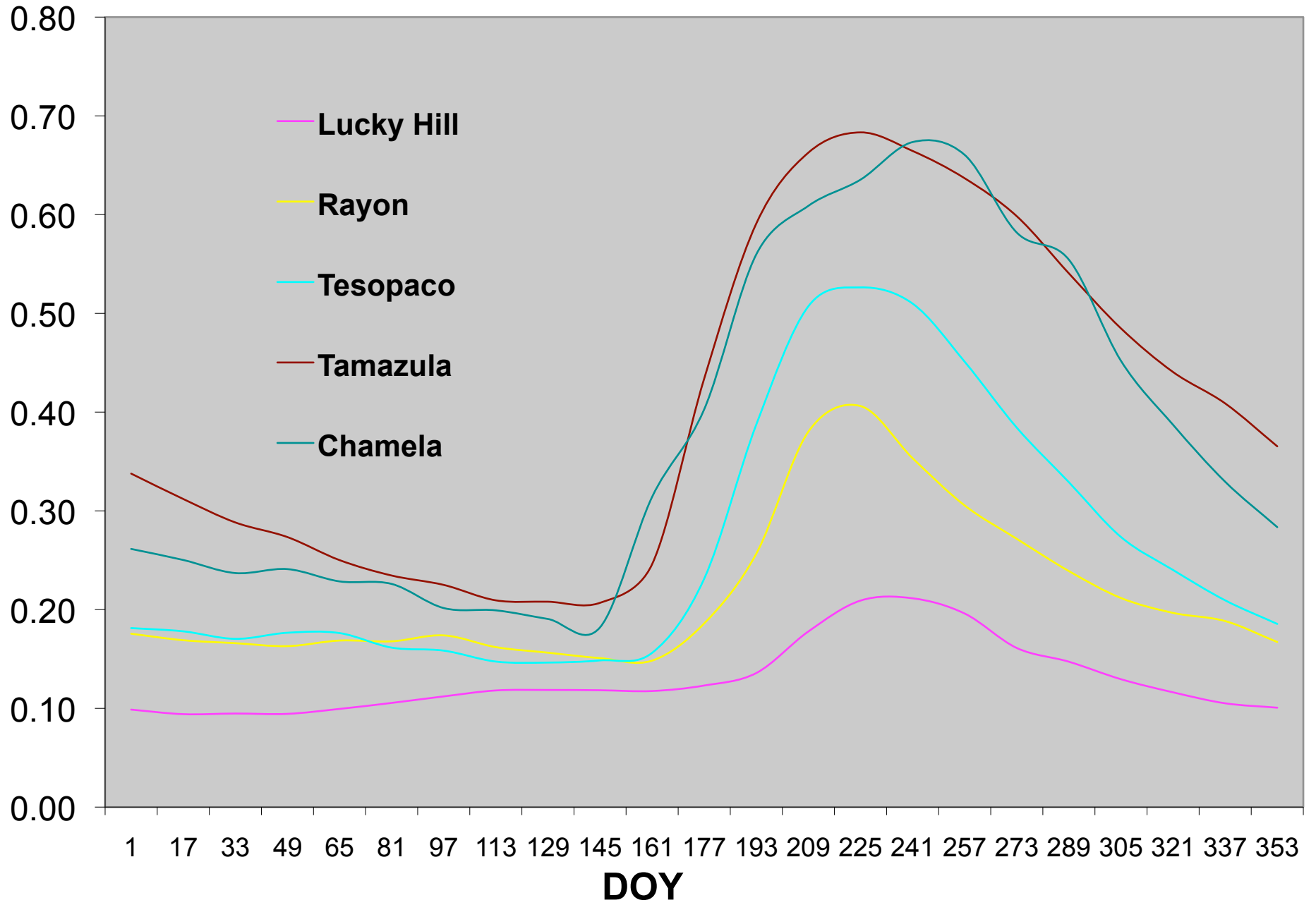
**Monthly average precipitación in the last 30 years (mm)  
most rain falls in the summer (July, August, September)**

# Precipitación y Reciclaje

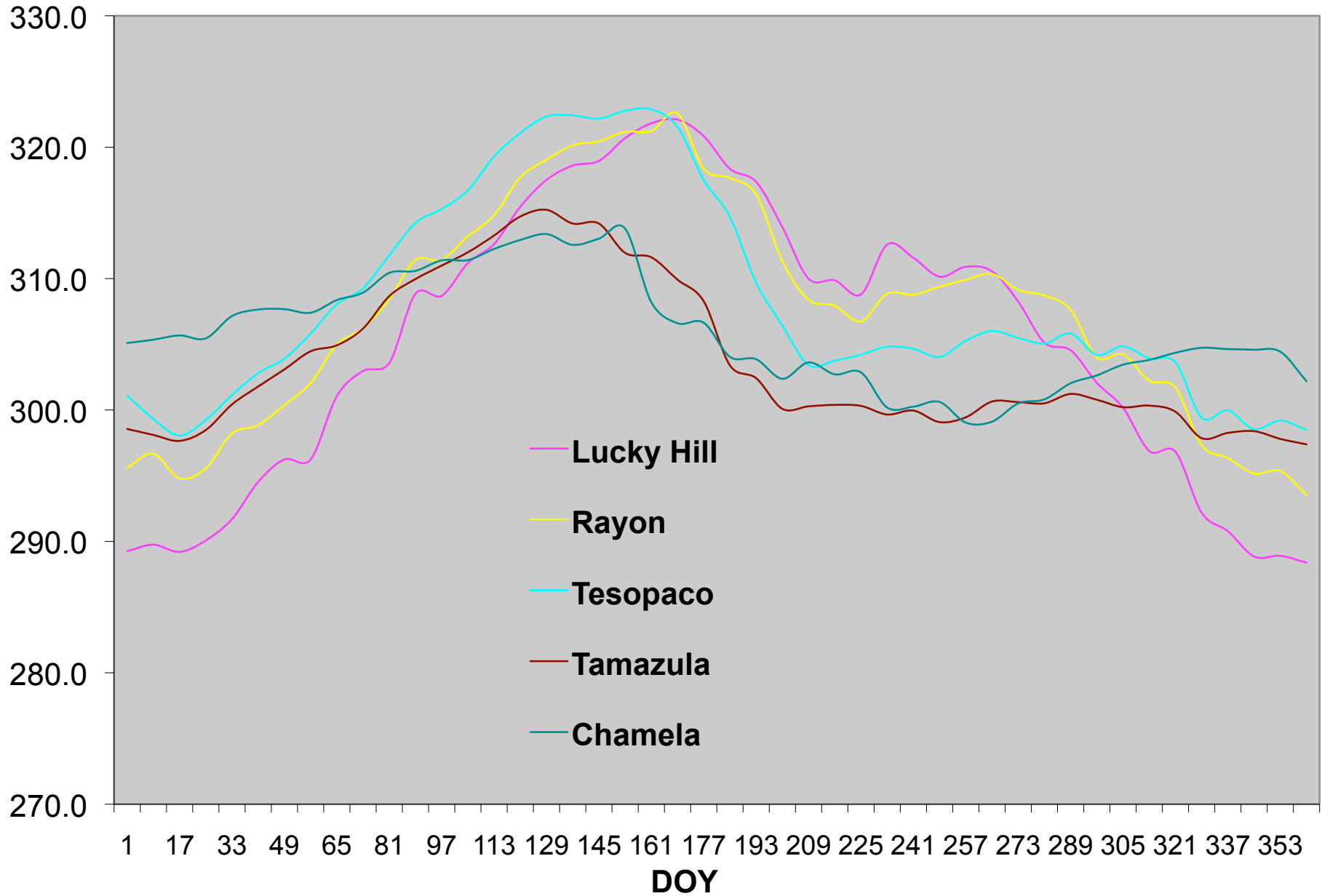




# EVI



# LST (K)

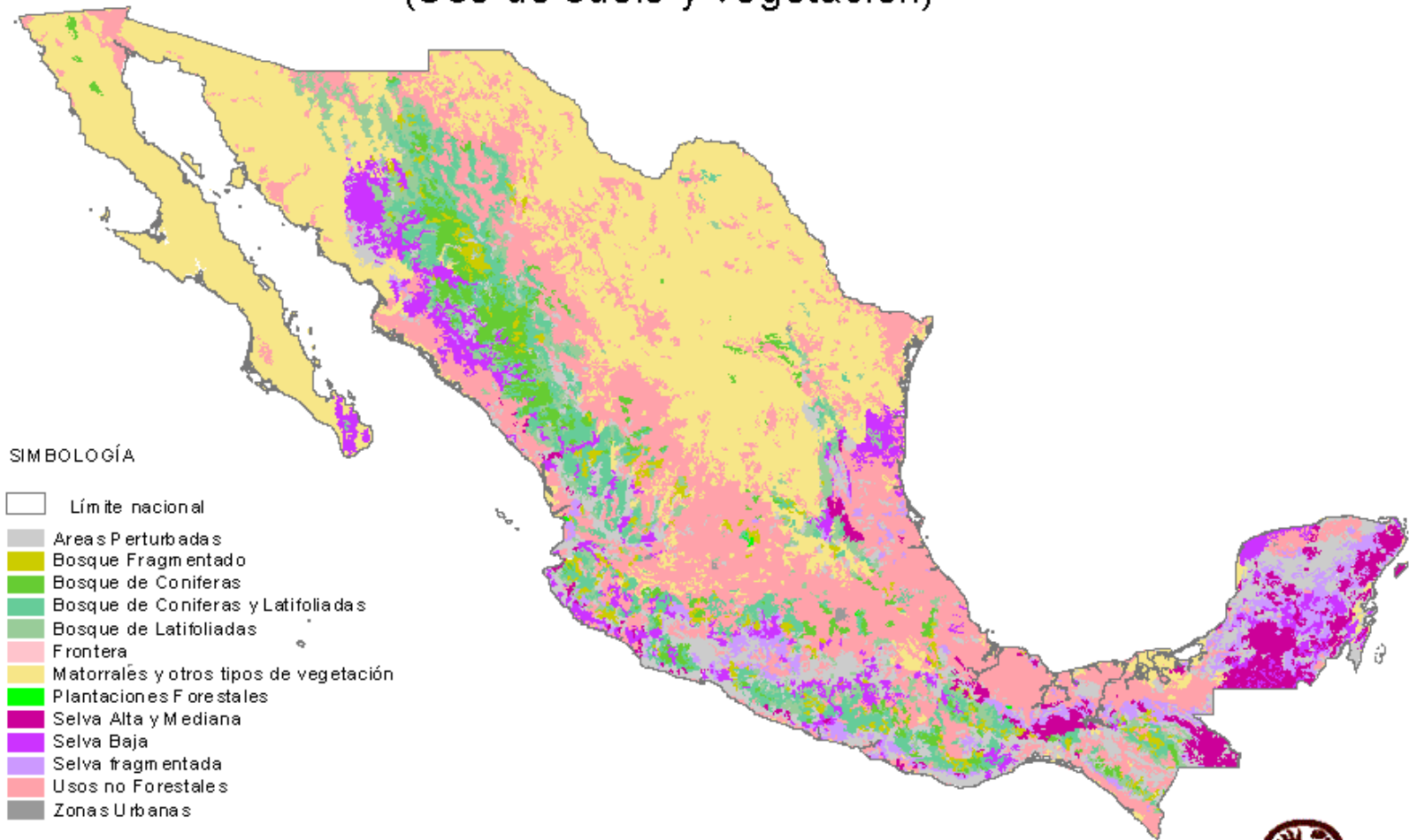


Changes in albedo, EVI and LST at each site between DOY 145 (pre-monsoon) and DOY 225 (Post-monsoon)

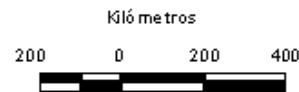
### Variación

Sitio	$\Delta_{\alpha}$	$\Delta_{\text{EVI}}$	$\Delta_{\text{LST}}$
<i>LH</i>	-0.01	0.09	-10
<i>RY</i>	-0.02	0.26	-13
<i>RT</i>	0.02	0.38	-18
<i>TV</i>	0.02	0.47	-14
<i>CH</i>	0.03	0.46	-10
<b>Medio</b>	0.01	0.33	-13

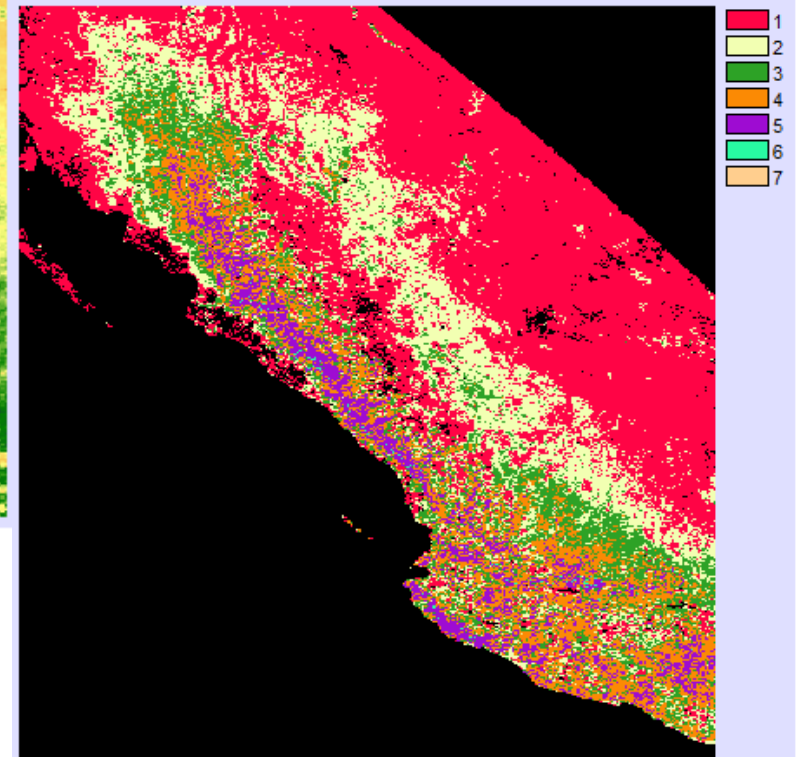
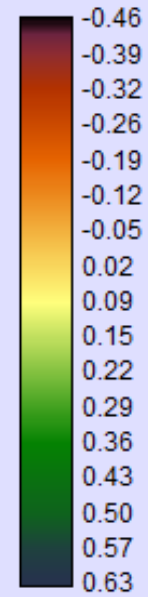
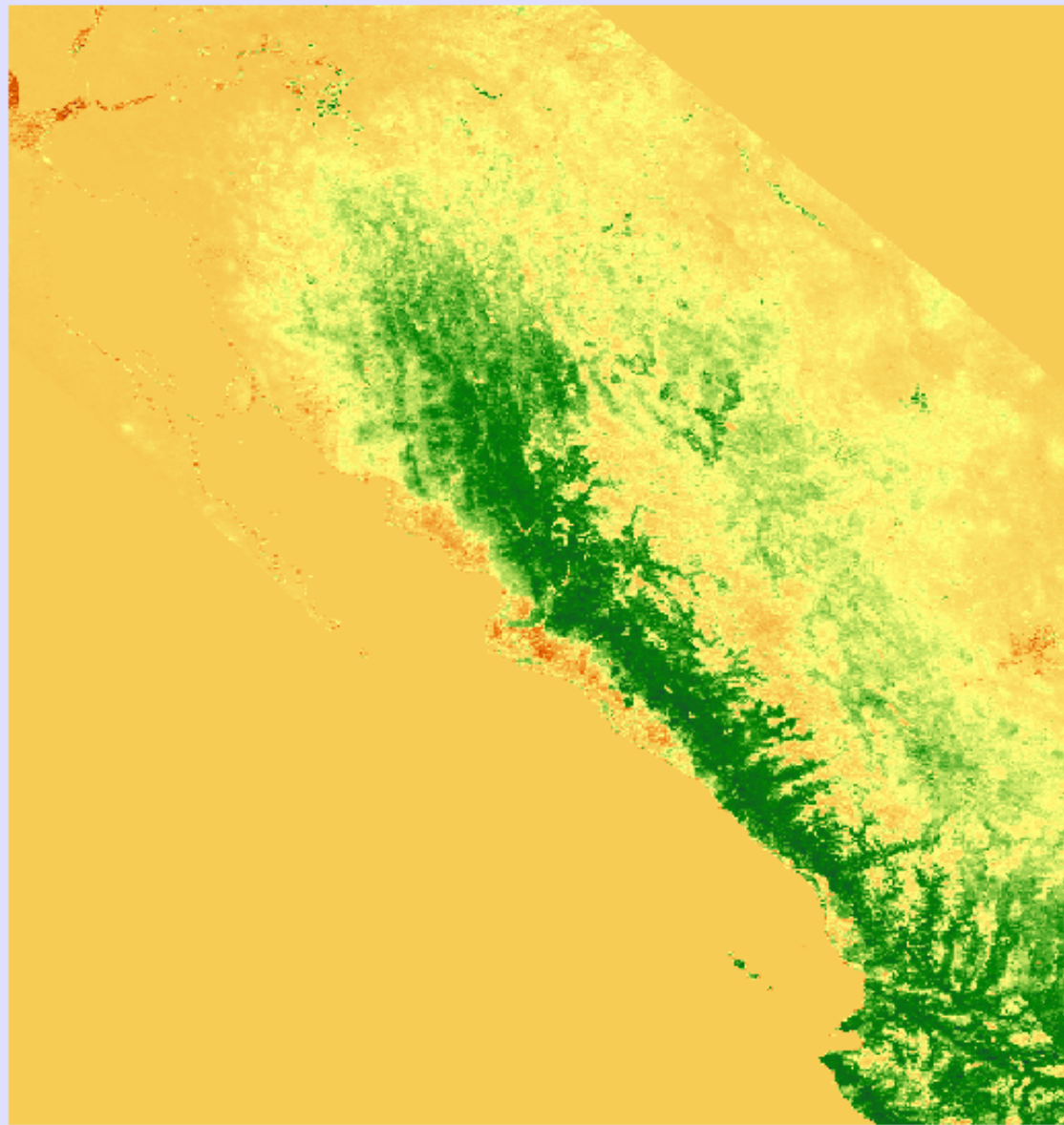
# Inventario Nacional Forestal Periodico (Uso de suelo y vegetación)



Cita: Dirección del Inventario Forestal, (1994). "Inventario Nacional Forestal Periodico (Uso de suelo y vegetación)". Escala 1: 1 000 000. México.



CONABIO



Differences in EVI between  
DOY=145 and DOY=225



Gracias